



Référence : LRC-D-50

Contrôleur D50



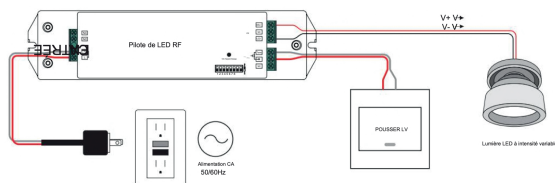
Données techniques

| | |
|-------------------------------|--------------------------------------|
| Fréquence | 868/869,5/916,5/434 mHz |
| Tension d'entrée | 200-240V AC |
| Tension de sortie | 200-240V AC |
| Courant de sortie | 1x800-1500 mA |
| Distance RF | 30M (cumulable) |
| Température de fonctionnement | -20° C +45° C |
| Dimensions | 210x50x32 mm |
| Contrôle | Bouton poussoir Radio-fréquence |

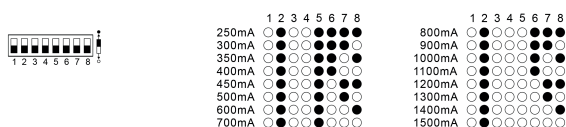
Indice protection IP20

Installation

Durée de vie 50000 heures



Dipswitch



| | | | | | | | | | | |
|-----------------------|------------------------------|----------------|-------|--------|--------|--------|--------|--------|--------|--|
| Output | Selectable Current | 250mA | 300mA | 350mA | 400mA | 450mA | 500mA | 600mA | 700mA | |
| | DC Voltage Range | 8-48V | 8-48V | 8-48V | 8-48V | 8-48V | 8-48V | 8-48V | 8-48V | |
| | Rated Power | 50W | | | | | | | | |
| Input | Selectable Current | 800mA | 900mA | 1000mA | 1100mA | 1200mA | 1300mA | 1400mA | 1500mA | |
| | DC Voltage Range | 8-48V | 8-48V | 8-48V | 8-46V | 8-41V | 8-38V | 8-35V | 8-33V | |
| | Voltage Range | 200-240V AC | | | | | | | | |
| | Frequency | 50/60Hz | | | | | | | | |
| | Power Factor (Typ.) | > 0.9 | | | | | | | | |
| | Efficiency (Typ.) | 87% @ 230VAC | | | | | | | | |
| | Input Current (Typ.) | 0.27A @ 230VAC | | | | | | | | |
| Inrush Current (Typ.) | COLD START Max. 2A at 230VAC | | | | | | | | | |